



Bramah House, 9 Gatliff Road
London SW1W

GARTONJONES.COM



Bramah House, 9 Gatliff Road London, SW1W

£1,100 Per Week

GARTON JONES.COM

8 Gatliff Road
Grosvenor
Waterside
Chelsea
London
SW1W 8DP

Lettings:
+44 (0) 20 7730 5007
gws@gartonjones.com
www.gartonjones.com

A TWO DOUBLE BEDROOM, TWO bathroom (1 en-suite), apartment to rent of approx. 804sq.ft (75sq.m) in Bramah House, part of the popular Grosvenor Waterside development in Chelsea. This well kept FURNISHED apartment has an open plan reception room, a modern kitchen with a breakfast bar and integrated appliances including a wine cooler. There is dark wood flooring, comfort cooling, FULL WIDTH BALCONY with DOCK VIEWS and good storage including built in wardrobes to the master bedroom and a utility cupboard housing a washing machine. Parking is available by separate negotiation. Residents have the use of 24-HOUR CONCIERGE, GYM & SPA. On-site Sainsbury's Local, coffee shop and private kids club. SLOANE SQUARE & VICTORIA station with Gatwick Express are within walking distance.

Available via Garton Jones on-site office at Grosvenor Waterside (underneath Bramah House).

*Please note furniture may differ to that shown in the current photos.

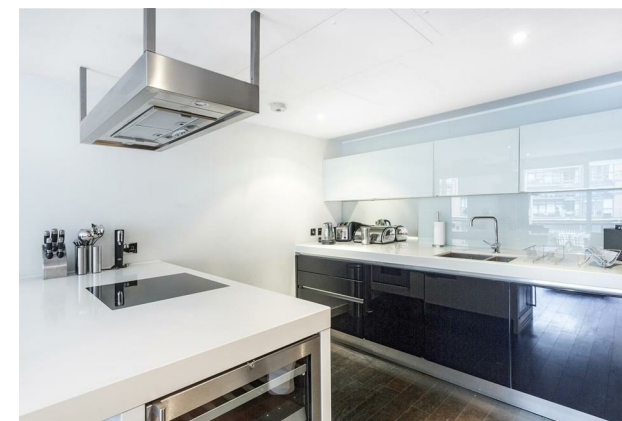
Council Tax: Westminster City Council (band F)

EPC Rating: TBC

12 month minimum term. 6 week deposit required.

To check broadband and mobile phone coverage, please visit Ofcom: ofcom.org.uk/phones-telecoms-and-internet/advice-for-consumers/advice/ofcom-checker

- 804 Sq.ft (75 Sq.m)
- 2 Double Bedrooms
- 2 Bathrooms (1 En-Suite)
- Open Plan Reception Room
- Kitchen With Gaggenau Integrated Appliances
- Full Width Private Terrace With Dock View
- 24 Hour Concierge & Residents Leisure Suite
- On-Site Sainsbury's, Coffee Shop, Crèche & Private Kids Club
- Within Walking Distance Of Victoria Train Station & Sloane Square
- Parking Available By Separate Negotiation



Bramah House

Approximate Gross Internal Area = 804 sq ft / 74.7 sq m

